



HALA SERIES – THE 20s
RESIDENCE 20.40

Ka Makana
AT HOAKALEI



RESIDENCE 20.40 A (MODEL)



RESIDENCE 20.40 B (R)

3 bedrooms & study
2.5 bathrooms

LIVING AREA	1,591 SQ. FT.
COVERED PORCH	105 SQ. FT.
COVERED LANAI	89 SQ. FT.
COVERED BALCONY	105 SQ. FT.
2-CAR GARAGE	441 SQ. FT.
TOTAL AREA	2,331 SQ. FT.

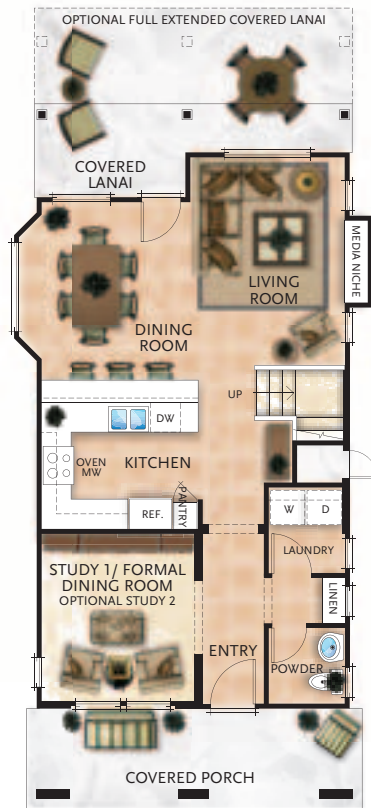
SQUARE FOOTAGE REPRESENTS
RESIDENCE 20.40 EXTERIOR A

HALA SERIES – THE 20s RESIDENCE 20.40

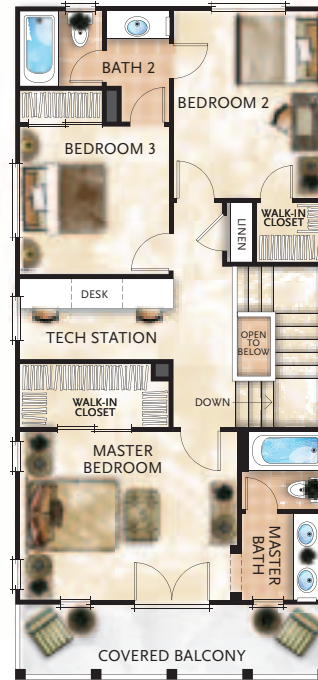
3 bedrooms & study
2.5 bathrooms

LIVING AREA	1,591 SQ. FT.
COVERED PORCH	105 SQ. FT.
COVERED LANAI	89 SQ. FT.
COVERED BALCONY	105 SQ. FT.
2-CAR GARAGE	441 SQ. FT.
TOTAL AREA	2,331 SQ. FT.

FLOORPLAN DEPICTS RESIDENCE 20.40 EXTERIOR A



FIRST FLOOR
EXTERIOR A



SECOND FLOOR
EXTERIOR A

Ka Makana
AT HOAKALEI

Illustrations are artists' conceptual depictions only of proposed improvements, are not necessarily to scale, and may differ from actual improvements, if any, when constructed. All square footage numbers are approximate and may vary due to plotting and field variations or method of measurement. We reserve the right to modify maps, floorplans, square footages, exteriors, specifications, features, dimensions, designs, building materials, options, colors, finishes, landscaping layout and materials, and product types without notice or obligation, including such changes which may affect the Energy Star® qualification status of any model. Building configurations, garage locations, garage access doors and accompanying stoop, number of steps, and window sizes and configurations may vary from those shown in the illustrative example based upon the floorplan, homesite, elevation and options selected. Garden walls (depicted on drawings as dashed lines) may be included with a home at our sole discretion. Furniture layout size and placement are shown for conceptual purposes only, and therefore, purchasers should measure their own furniture to ensure that it fits in the desired locations. Furniture is not included in the purchase of a residence. The prices of our homes, standard features, and upgrades are subject to change at any time without prior notice or obligation and are subject to availability.

