



BANYAN SERIES – THE 50s  
RESIDENCE 50.10

*Ka Makana*  
AT HOAKALEI



RESIDENCE 50.10 A (R)



RESIDENCE 50.10 B (R)



RESIDENCE 50.10 C (MODEL)

4 bedrooms & loft  
3 bathrooms

LIVING AREA . . . . .	2,684 SQ. FT.
PORCH . . . . .	194 SQ. FT.
COVERED LANAI . . . . .	104 SQ. FT.
COVERED BALCONY . . . . .	92 SQ. FT.
2-CAR GARAGE PLUS CARPORT . . . . .	651 SQ. FT.
TOTAL AREA . . . . .	3,725 SQ. FT.

SQUARE FOOTAGE REPRESENTS  
RESIDENCE 50.10 EXTERIOR C



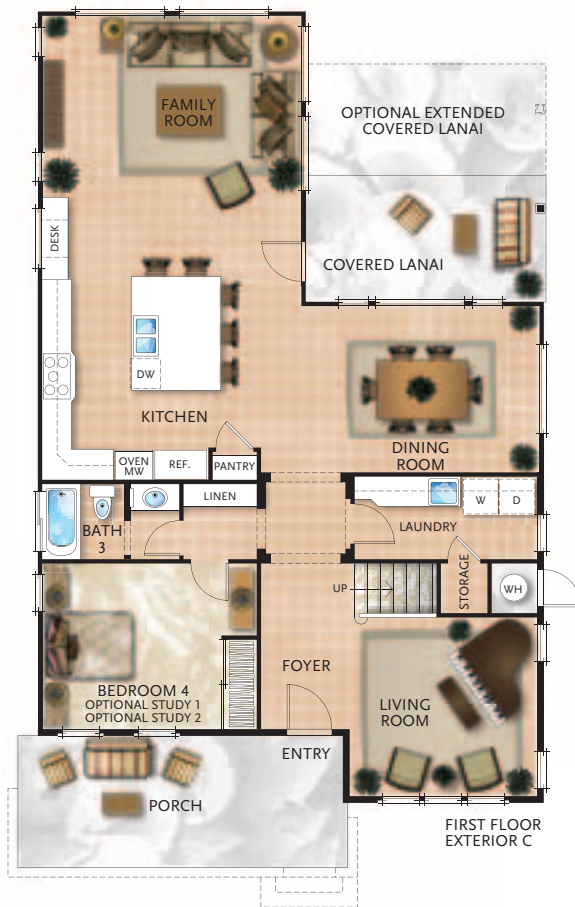
# BANYAN SERIES – THE 50s

## RESIDENCE 50.10

4 bedrooms & loft  
3 bathrooms

LIVING AREA	2,684 SQ. FT.
PORCH	194 SQ. FT.
COVERED LANAI	104 SQ. FT.
COVERED BALCONY	92 SQ. FT.
2-CAR GARAGE PLUS CARPORT	651 SQ. FT.
TOTAL AREA	3,725 SQ. FT.

FLOORPLAN DEPICTS RESIDENCE 50.10 EXTERIOR C



*Ka Makana*  
AT HOAKALEI

Illustrations are artists' conceptual depictions only of proposed improvements, are not necessarily to scale, and may differ from actual improvements, if any, when constructed. All square footage numbers are approximate and may vary due to plotting and field variations or method of measurement. We reserve the right to modify maps, floorplans, square footages, exteriors, specifications, features, dimensions, designs, building materials, options, colors, finishes, landscaping layout and materials, and product types without notice or obligation, including such changes which may affect the Energy Star® qualification status of any model. Building configurations, garage locations, garage access doors and accompanying stoop, number of steps, and window sizes and configurations may vary from those shown in the illustrative example based upon the floorplan, homesite, elevation and options selected. Garden walls (depicted on drawings as dashed lines) may be included with a home at our sole discretion. Furniture layout size and placement are shown for conceptual purposes only, and therefore, purchasers should measure their own furniture to ensure that it fits in the desired locations. Furniture is not included in the purchase of a residence. The prices of our homes, standard features, and upgrades are subject to change at any time without prior notice or obligation and are subject to availability.

