

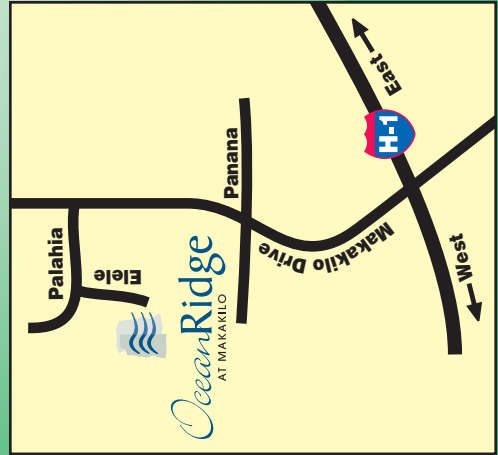



# *Ocean*Ridge

AT MAKAKILO

---

**D·R·HORTON** DHI  
Listed  
NYSE  
*America's Builder*  
HAWAII







**Building**


**#**    **Type**

103    Type 2

G        Type 1

3        Type 1

 Plan A  
 Plan B

 North

**Building**



Home Number

Guest Parking

Parking Number

Trash Bins

Mail Boxes

*Site plans and other advertising materials are included to assist the reader in visualizing the development. The developer reserves the right to modify the site plan, specifications and features without prior notice or obligations. The site plan may not always depict lot lines, common areas, streets, etc. and is only meant to give the buyer a general view of the site plan. Some models may be reversed on certain lots when compared to the floor plans in the brochure. Revised 1/04.*

## D.R. Horton's Steps to Your Satisfaction

*At D.R. Horton, Schuler Division, we are committed to building your home with the exceptional quality that has made us one of Hawai'i's premier homebuilders...and with the assurance you deserve. The D.R. Horton Step Process was created to build a partnership with you and our team so that you can rest assured that your home is being built with your satisfaction in mind.*

### Step 1

#### **New Home Sales Manual**

D.R. Horton's new home sales representative reviews "Your New Home Manual" with you at point of sale to ensure you are given the information you need about the purchase process, the construction of your new home and warranty.

### Step 2

#### **Independent Inspections**

In addition to county inspectors, D.R. Horton hires an independent company to inspect some of the critical structural aspects of your home. From the foundation to the structural framing connections, the independent inspectors review these components to insure high quality in every D.R. Horton Home.

### Step 3

#### **Hard Hat Tour**

At the mid-point process of the construction on your home you will be invited to walk your new home. At this tour you will have an opportunity to see some of the quality construction techniques, materials and systems used in your new home.

### Step 4

#### **Quality Assurance Inspection**

Prior to your orientation tour, a graded inspection of your home conducted by your Warranty Service Representative will be done. Ensuring that the quality of workmanship and conditions of materials used in your new home meets the building plans and specifications is their goal.

### Step 5

#### **Post Closing**

D.R. Horton's Warranty Service Department will contact you approximately 30 days after move in to see if you would like a Warranty Service Representative to visit your home, review maintenance techniques and address any questions or concerns that you may have about your new home.

### Step 6

#### **Your New Home Warranty**

D.R. Horton is one of the few homebuilders in Hawai'i that offer it's customers a limited 10 Year Warranty. The details of our warranty are outlined in your New Home Manual.

D.R. Horton is also one of the few homebuilders that offer a 24-hour emergency call center for those now frequent emergency calls after hours.

This warranty program has been put in place to give you some peace of mind that D.R. Horton, Schuler Division will be there long after you have purchased your home.



## Quality Features



### **INSIDE YOUR HOME**

- 2-Car finished garages (per plan)
- Split system air conditioning (Living Room and Master Bedroom)
- Whirlpool appliances including: self cleaning electrical range/oven, refrigerator, multicycle dishwasher, microwave/hood
- Corian Solid Surface kitchen countertops with designer colors
- Steel and wood framing
- 1 year customer care warranty program
- 10 year limited structural warranty
- Maple Shaker cabinetry with quality door pulls in kitchen
- White Raised panel cabinetry with quality door pulls in baths
- Quality garage door with insulated panels and quiet motor and windows
- Automatic garage door opener with 2 remotes
- Kitchen nook and pantries
- Large kitchen sink with pull out spray faucet
- Raised two panel interior doors
- Recessed lighting (per plan)
- Designer selected wall to wall carpeting available in several beautiful colors.
- No wax vinyl floor covering available in several designer patterns
- Extra storage under stairs
- Smoke detectors
- Dead bolt lock at front entry
- Mirrored sliding closet doors (per plan)
- Cultured marble countertops in bathrooms
- Ceramic tile tub/shower surrounds
- Prewired for telephone, cable tv and ceiling fans

### **ENERGY CONSERVATION FEATURES**

- 80 gallon water heater and timer
- Dual pane vinyl windows
- Insulated walls and ceilings (per plan)
- Attic space ventilation

### **PLEASING EXTERIORS**

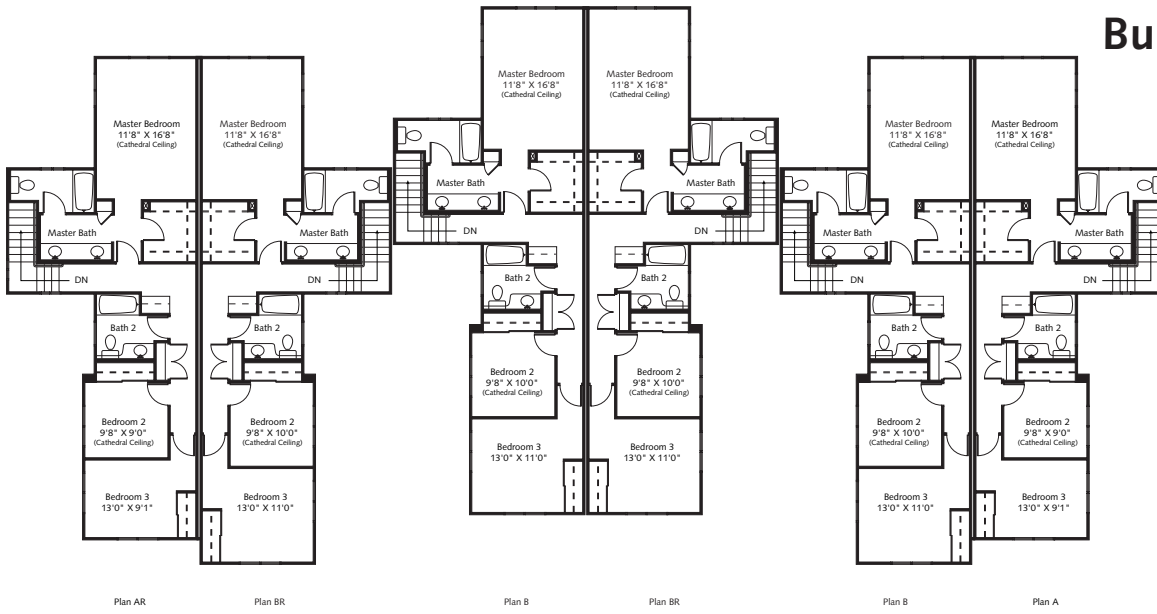
- Architecturally designed common area landscaping with automatic sprinklers
- Hardiplank® fiber-cement siding with 50 year limited warranty
- Composition shingle roof with 30 year limited warranty
- Fenced yard areas with ground floor living areas (per plan)

### **UPGRADE CHOICES**

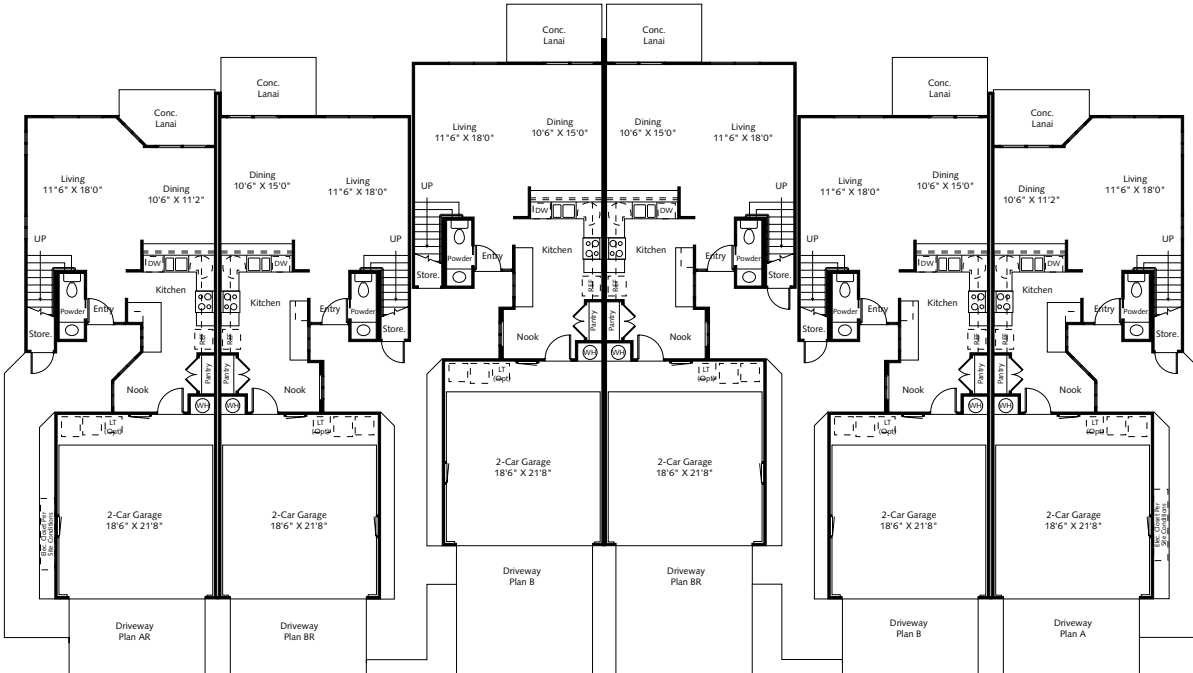
- Security system
- Flooring upgrades
- Appliance package upgrade
- Corian® Solid surface countertop upgrades
- Kitchen sink upgrades
- Kitchen and bath faucet upgrades
- Ceiling fans
- Glass tub/shower enclosures
- Shower option - Master Bath
- Split A/C for Secondary Bedrooms



# Building Type 1

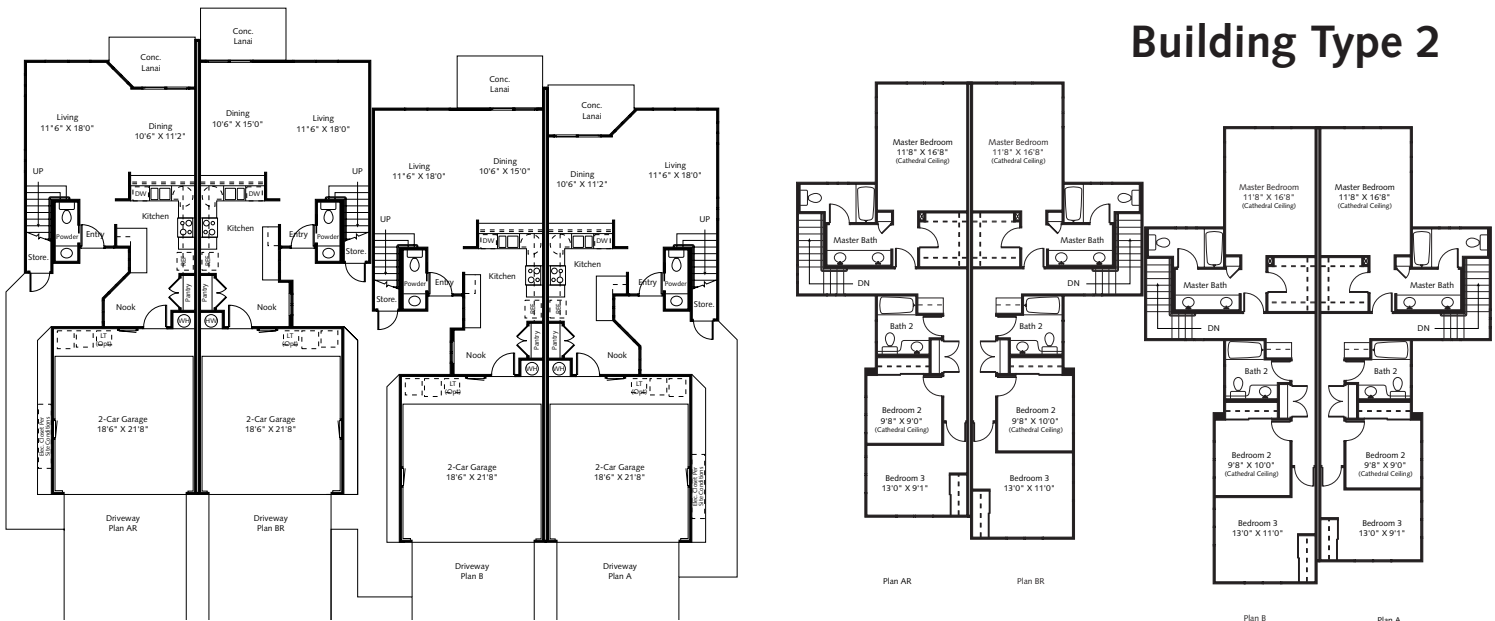


Second Floor



First Floor

# Building Type 2



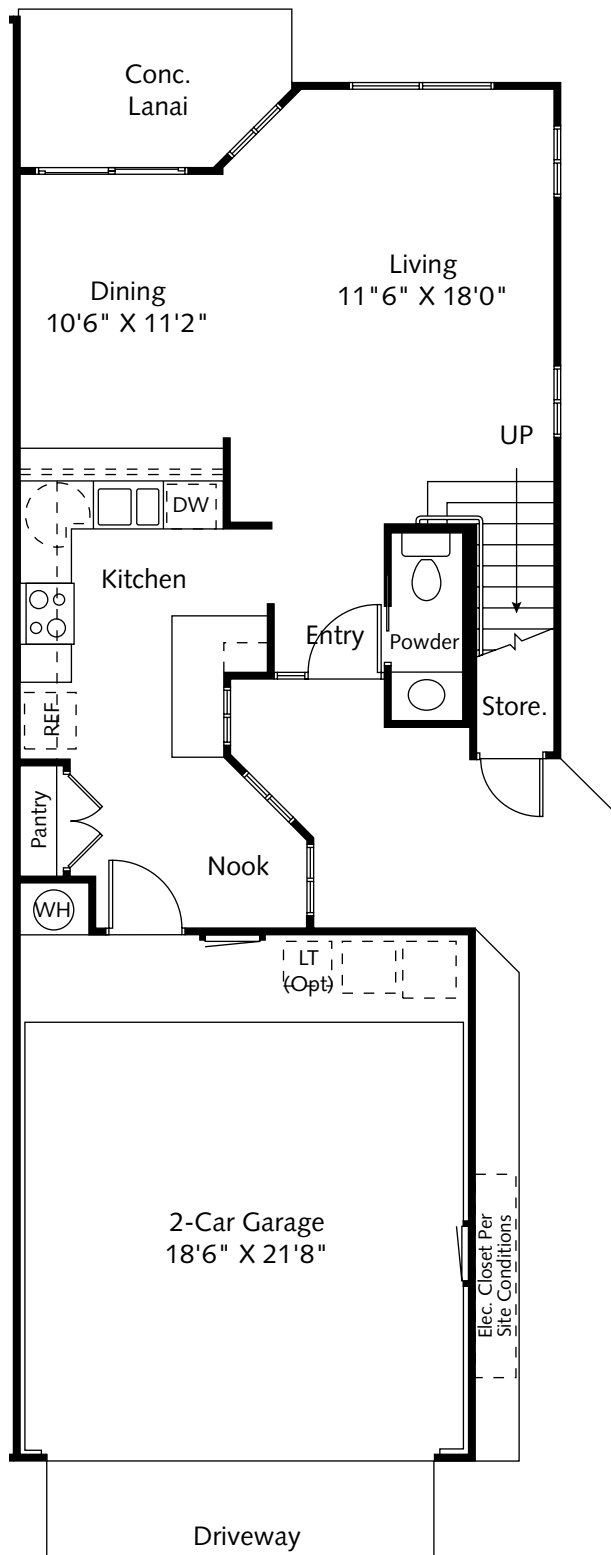
First Floor

Second Floor

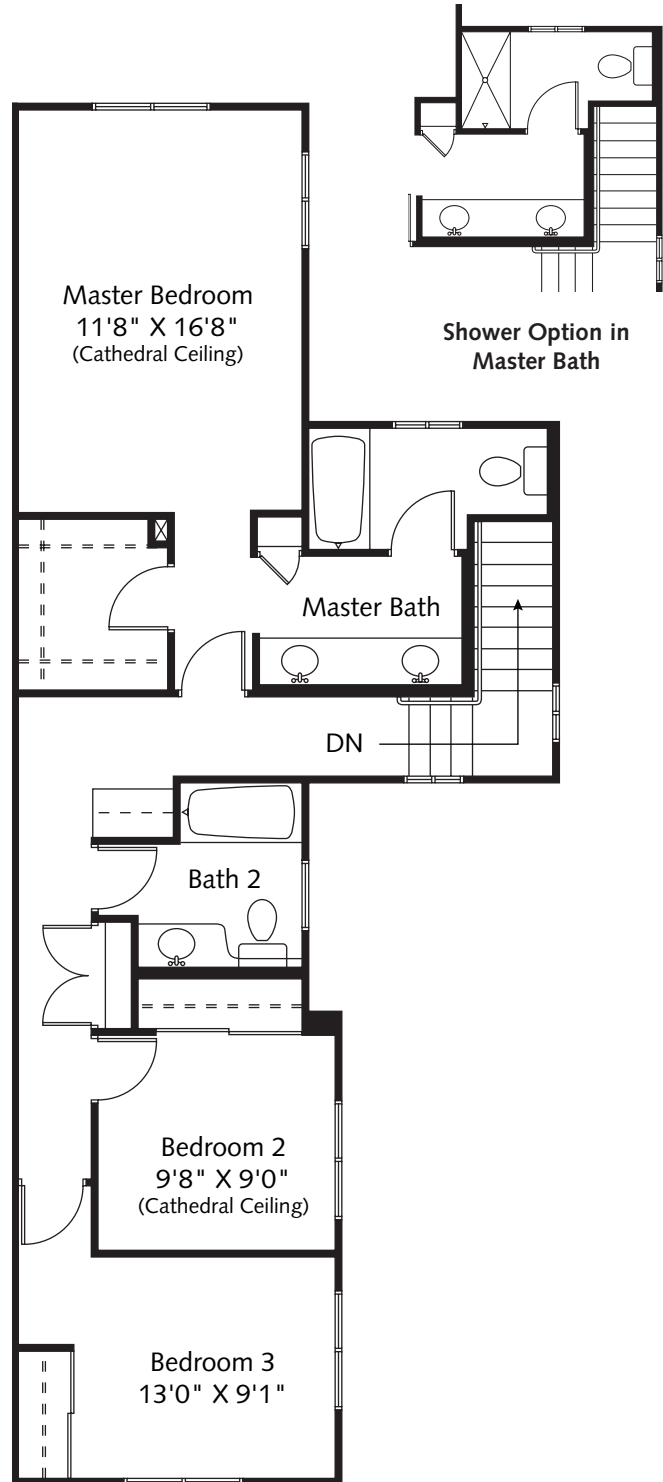
Because we are continually improving our homes, we reserve the right to make changes and modifications to methods and materials of construction and to the features included in our homes without notice. Square footage and dimensions are intended to be as accurate as possible, however, due to actual construction, square footage and dimensions may differ. Ceiling heights may vary. These floorplans and renderings are a fair representation of the models to assist the customer in visualizing the homes and may not be accurately depicted. Features and floorplans may change.

# Plan A

Living	1,424 Sq. Ft.
Lanai	72 Sq. Ft.
Entry	27 Sq. Ft.
Garage	406 Sq. Ft.
<b>Total</b>	<b>1,929 Sq. Ft.</b>



First Floor



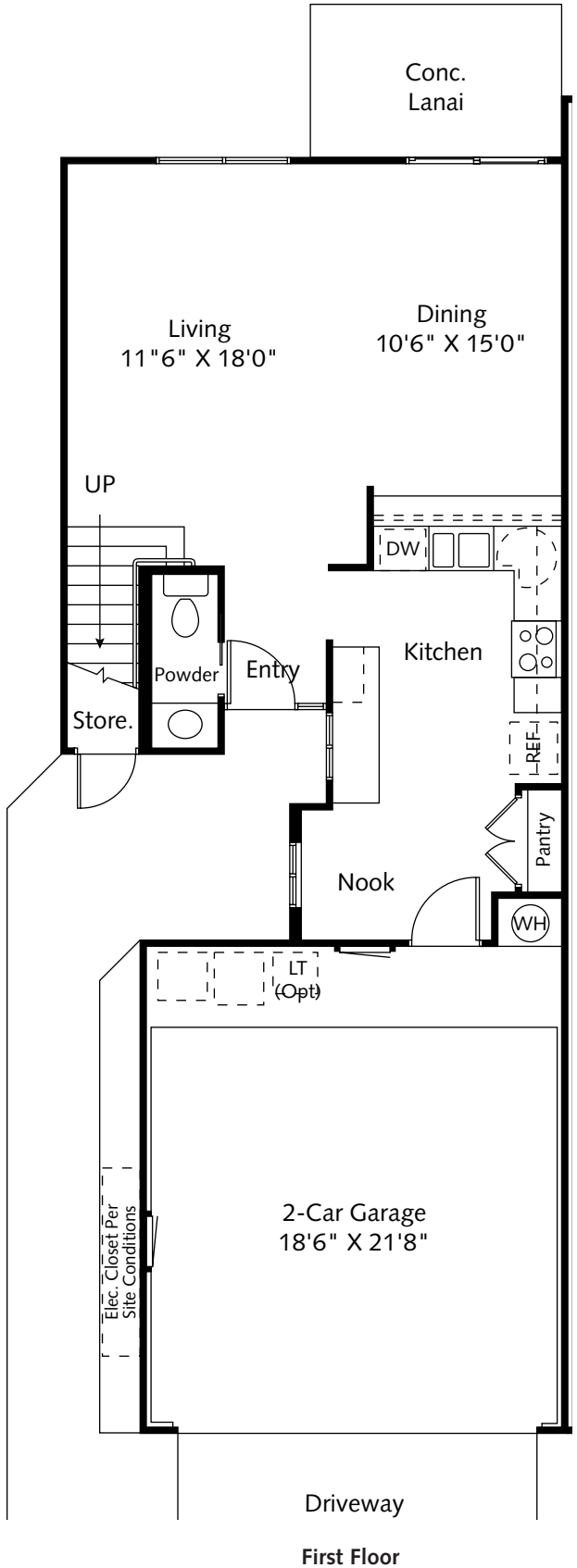
Second Floor

Because we are continually improving our homes, we reserve the right to make changes and modifications to methods and materials of construction and to the features included in our homes without notice. Square footage and dimensions are intended to be as accurate as possible, however, due to actual construction, square footage and dimensions may differ. Ceiling heights may vary. These floorplans and renderings are a fair representation of the models to assist the customer in visualizing the homes and may not be accurately depicted. Features and floorplans may change.

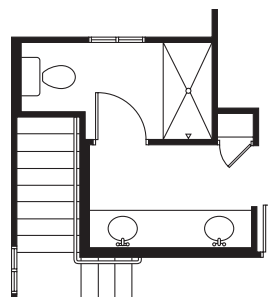
# Plan B

Living	1,529 Sq. Ft.
Lanai	78 Sq. Ft.
Entry	17 Sq. Ft.
Garage	406 Sq. Ft.
<b>Total</b>	<b>2,030 Sq. Ft.</b>

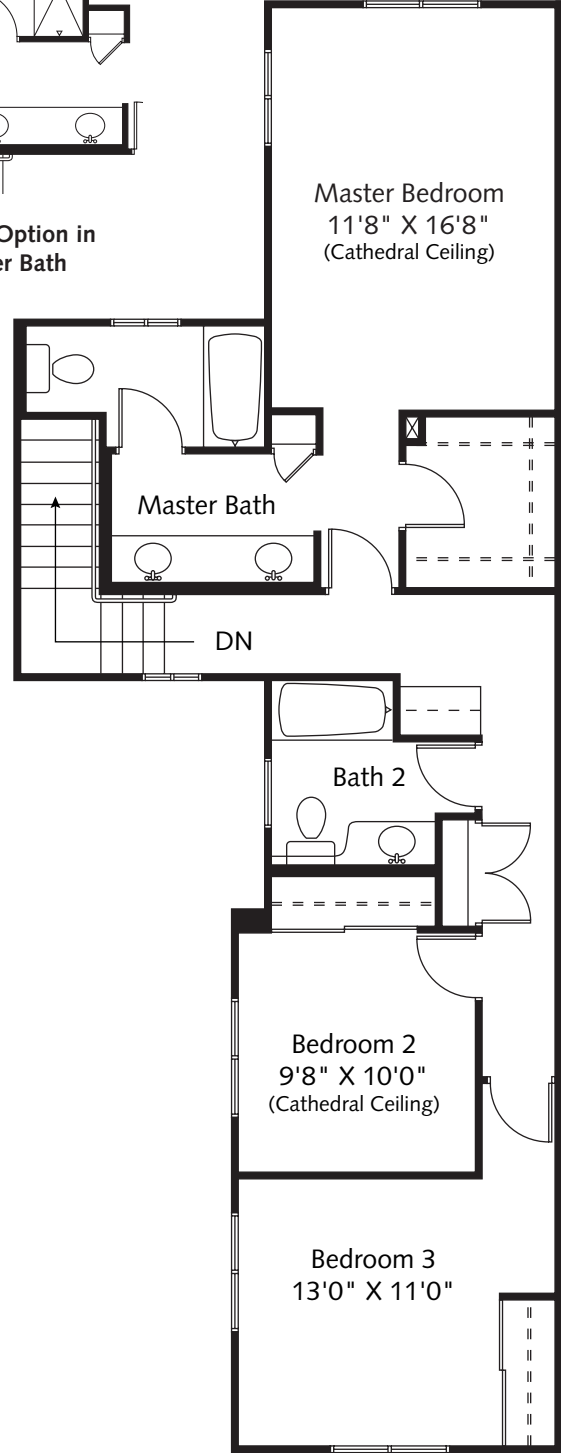
Plan B	
Home Numbers 103, 303, 1103, 1104, 1403 and 1404	
Living	1,529 Sq. Ft.
Lanai	39 Sq. Ft.
Entry	17 Sq. Ft.
Garage	406 Sq. Ft.
<b>Total</b>	<b>1,991 Sq. Ft.</b>



First Floor



Shower Option in Master Bath



Second Floor

Because we are continually improving our homes, we reserve the right to make changes and modifications to methods and materials of construction and to the features included in our homes without notice. Square footage and dimensions are intended to be as accurate as possible, however, due to actual construction, square footage and dimensions may differ. Ceiling heights may vary. These floorplans and renderings are a fair representation of the models to assist the customer in visualizing the homes and may not be accurately depicted. Features and floorplans may change.