



The
Colony
AT THE PENINSULA

A Renaissance in Condominium Living.

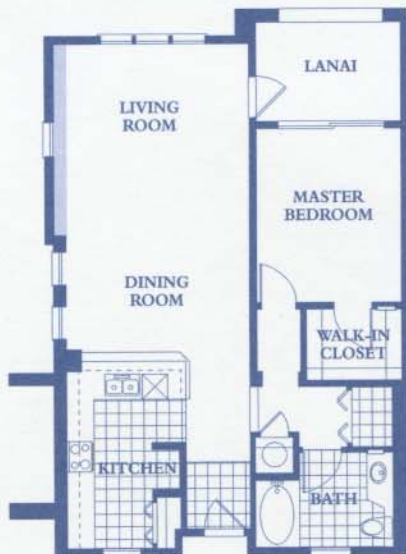


An Oasis of peace and beauty.

Your home in Hawai'i should be your own personal paradise. It should be a lifestyle that embraces luxury and comfort, surrounded by beautiful landscape and calming waters. This lifestyle comes true at The Colony.



ene



PLAN 1

1 BEDROOM / 1 BATH

LIVING AREA*	904
LANAI	82
TOTAL	986



PLAN 1A

1 BEDROOM / 1 BATH

LIVING AREA*	893
LANAI	82
TOTAL	975

Plan 1 is proof that efficiency can be elegant and graceful. Perfect for young professionals, the design emphasizes a spacious Great Room (*Plan 1A slightly smaller*) for living/dining and a lavish master suite, including a large bath, well-designed walk-in closet and private lanai.



...issance in

*The floor plans shown are a fair representation to assist the public in visualizing the interiors and may not be accurate.



PLAN 2

2 BEDROOM / 2 BATH

LIVING AREA*	1,282
LANAI	104
TOTAL	1,386

Plan 2 includes a Great Room that naturally extends to the gourmet kitchen and comfortable dining nook. The master suite features an oversize bath, convenient walk-in closet and entrance to a private lanai. The second bedroom (*Plan 2A slightly smaller*) with full bath is great for a growing family or home office.



PLAN 2A

2 BEDROOM / 2 BATH

LIVING AREA*	1,262
LANAI	104
TOTAL	1,366



condominium



PLAN 3

2 BEDROOM / 2 BATH

LIVING AREA*	1,345
LANAI	84
TOTAL	1,429



Plan 3 centers around an expansive Great Room and gourmet kitchen that is ideal for entertaining friends and family. The master suite includes a luxurious bath that leads to a well-appointed walk-in closet. The large second bedroom suite includes a full bath, walk-in closet and entry to the private lanai.



PLAN 4

3 BEDROOM / 2 BATH

LIVING AREA*	1,457
LANAI	121
TOTAL	1,578

Plan 4 is a homeowner's dream – the spaciousness of a single family home with all the conveniences of condominium living. The inviting Great Room opens to the large private lanai and gourmet kitchen and dining area, perfect for all your entertaining needs. Plan 4 offers a master suite with a large private bath and walk-in closet, a second bedroom and full bath, and a third study/bedroom, all with ample storage and spectacular views.



Standard Features

An array of standard features, many often found as upgrades in other developments, exemplify the quality and luxury that are hallmarks of The Colony at the Peninsula.

Distinctive Interiors

- Spacious nine foot ceilings
- Dual glazed windows for insulation
- Luxurious wall to wall carpeting
- Stylish recessed ceiling lighting
- Elegant mirrored closet doors
- Durable vinyl closet shelves
- Convenient walk-in closets
- Private lanais
- Air conditioning

Luxurious Bathrooms

- Soaking tubs
- Ceramic tub surrounds
- Elegant plumbing features
- Designer bathroom light fixtures
- Granite counter tops
- Double vanity sinks in Plans 2, 3 & 4
- Stylish white raised panel cabinets
- Mirrored medicine cabinets

Custom Kitchens

- Contemporary layouts
- Rich granite counter tops
- Custom cabinet doors
- Sophisticated designer lighting

Standard Appliances

- Range & oven
- Dishwasher
- Range hood with built in microwave
- Garbage disposal
- Electric water heater
- Refrigerator
- Washer & dryer

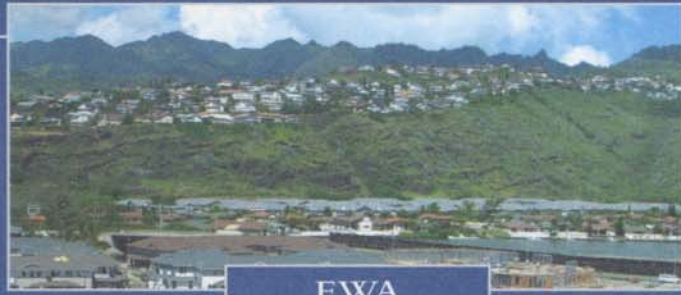
Amenities

Stroll along The Colony's meandering walkways, lush tropical plantings, courtyards and fountains. The Colony features a wide range of amenities as part of Phase 2.

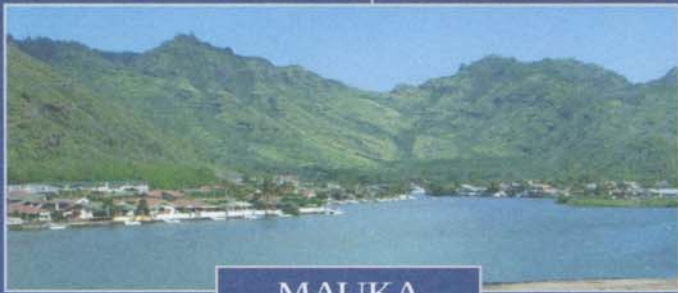
- Secured entrance
- Secured garage parking
- Landscaped courtyards
- Pool
- Jacuzzi
- Barbeque
- Party area



A Whole New
View of
Marina Living.

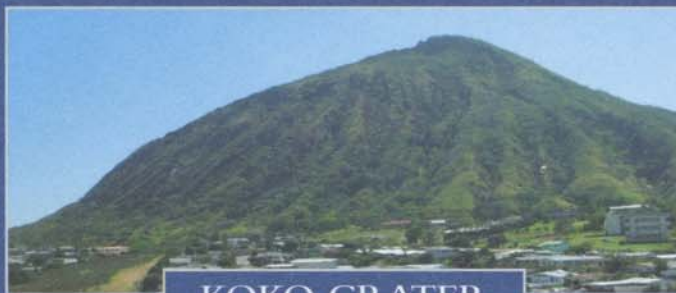


EWA

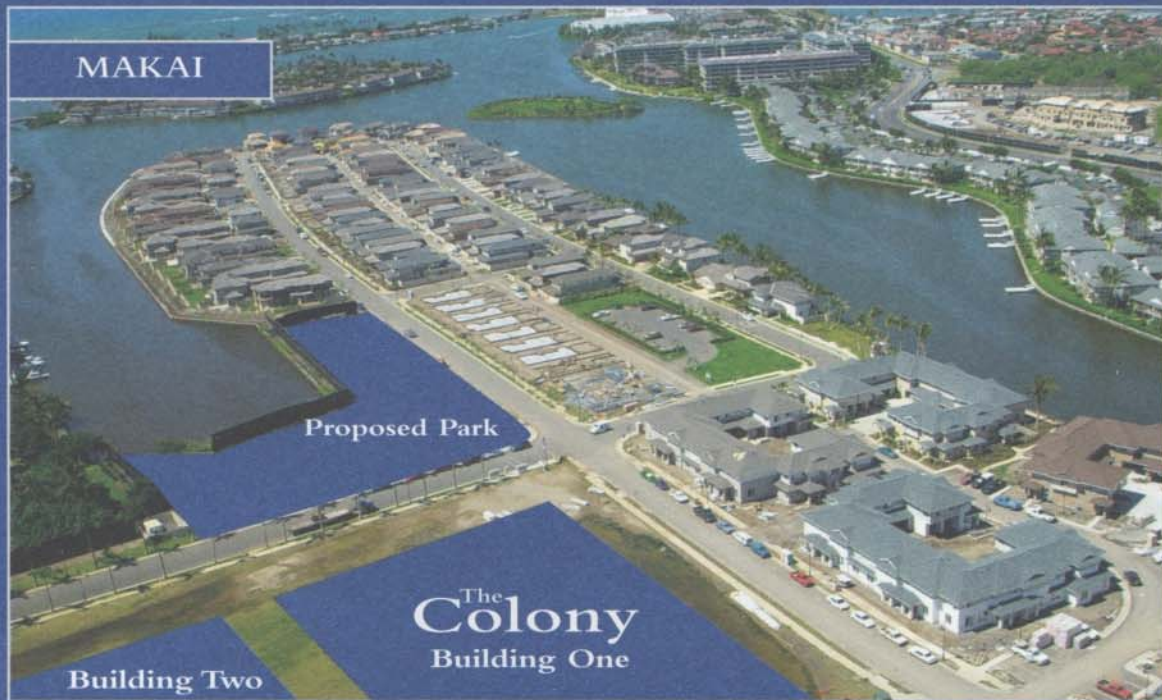


MAUKA

The Colony at the Peninsula offers a whole new perspective on luxury living. These brand new 4-story condominium homes provide beautiful mountain and marina views.



KOKO CRATER



MAKAI

Proposed Park

Building Two

The Colony
Building One

The above photography is to assist the viewer in understanding location orientations and is not intended to indicate specific views from The Colony.