

ANUHEA

AT MAKAKILO

DISTINCTIVE EXTERIORS

Underground Utilities
Steel & Wood Framing
Covered Front Porches
Decorative Exterior Light Fixtures
Front Yard Landscaping
Composition Shingle Roof with
30 Year Limited Warranty
10 Year Limited Structural
Warranty
50 Year Limited Siding
Warranty on Hardiplank Siding



UPGRADE CHOICES

Central or Split System Air Conditioning
Appliance Upgrades
Decks (Per Plan)
Monier Tile Roofing
Wood and Tile Flooring Upgrades
Solar System
Insulation in Walls
Corian Kitchen Countertop Color Upgrades
Plus many more options
Ask your sales representative
for more details

INSIDE YOUR HOME

Designer Progress Light Fixtures
Corian Kitchen Countertops
Interior Laundry Room (Per Plan)
Prewired for Telephones, Cable TV and
Ceiling Fans
Cathedral or Vaulted Ceilings for
Added Spaciousness (Per Plan)
In Sink Erator
Quality Kitchen Cabinets
Quality Whirl Pool Appliances
(Self-Cleaning Oven, Range & Dishwasher)
Wall-to-Wall Carpeting
No Wax Vinyl Flooring in Kitchen & Baths
Double Vanity In Each Master Bath
Smoke Detectors
Vinyl Windows
Automatic Garage Door Opener
with 2 Remotes
Insulated Attics
2-Car Enclosed Garage
Designer Moen Plumbing Fixtures

NO COST CHOICES

Flooring, Carpet and Ceramic Tile Entry

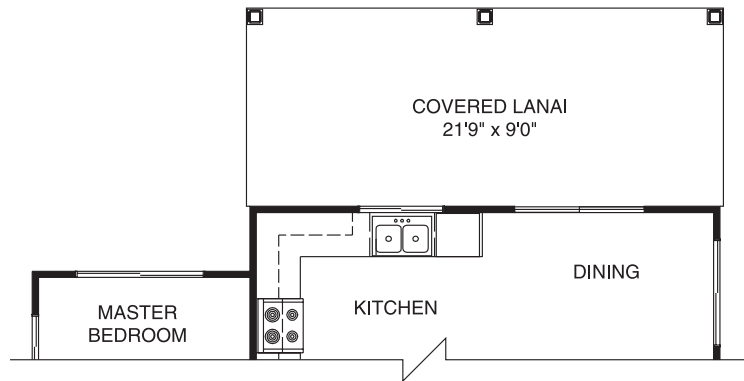


Because we are continually improving our homes, we reserve the right to make changes and modifications to methods and materials of construction and to the floorplans, features, square footage and room dimensions without notice. Floorplans, features, square footage and room dimensions are intended to be as accurate as possible. However, due to actual construction, floorplans, features, square footage and room dimensions may differ. These floorplans and renderings are a fair representation of the models to assist the customer in visualizing the homes and may not be accurately depicted. Sales prices are subject to change without notice. Check with your sales representative.

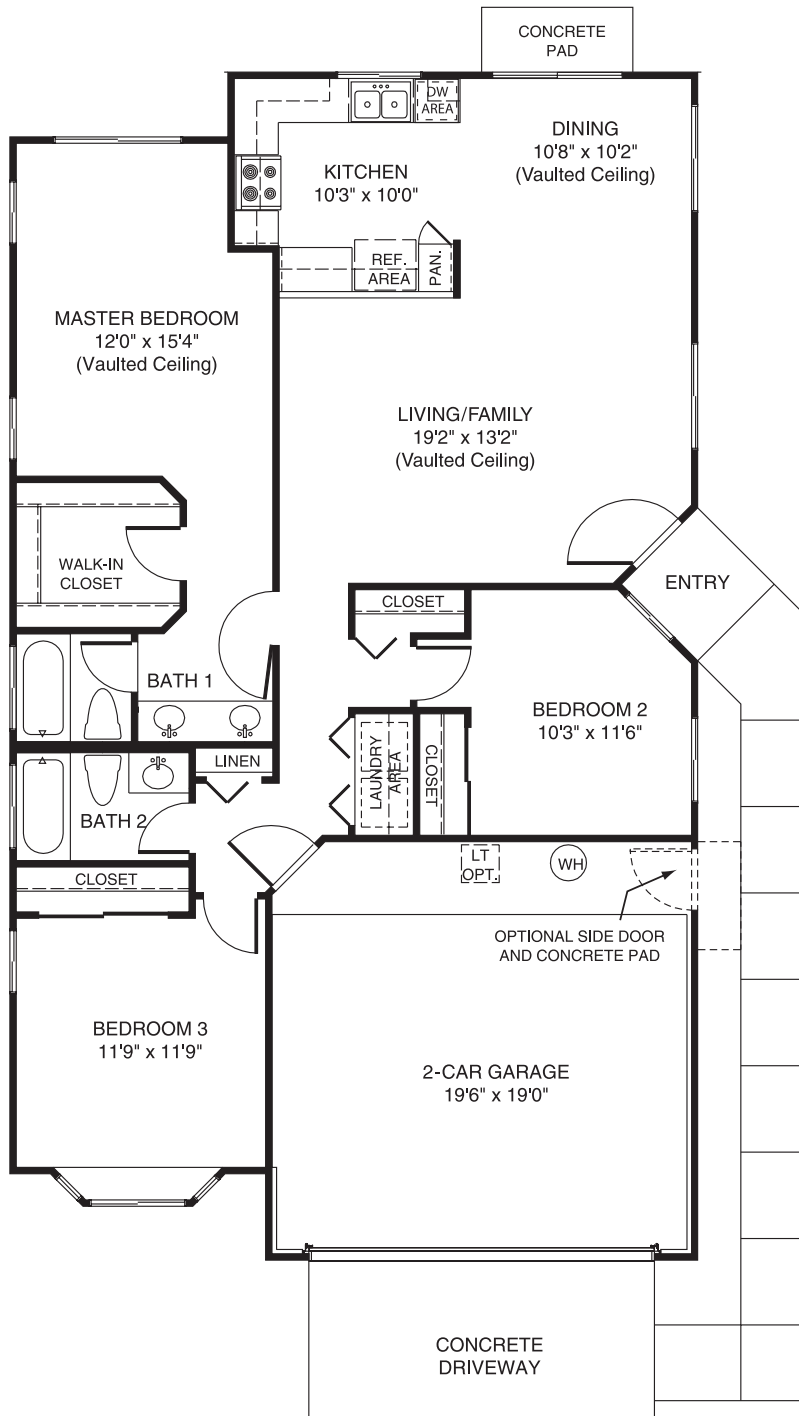
'Olu'olu

(PLAN 1)

3 Bedroom / 2 Bath



COVERED LANAI OPTION
(Additional 202 S.F.)

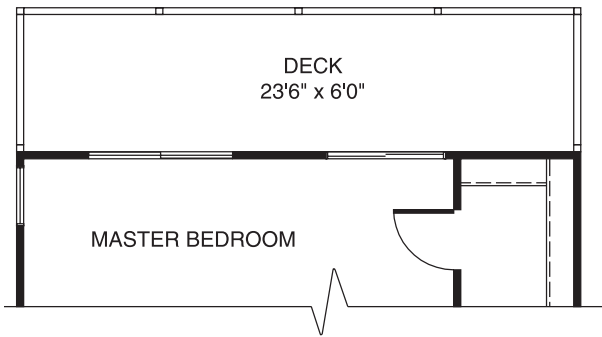


FLOOR AREA

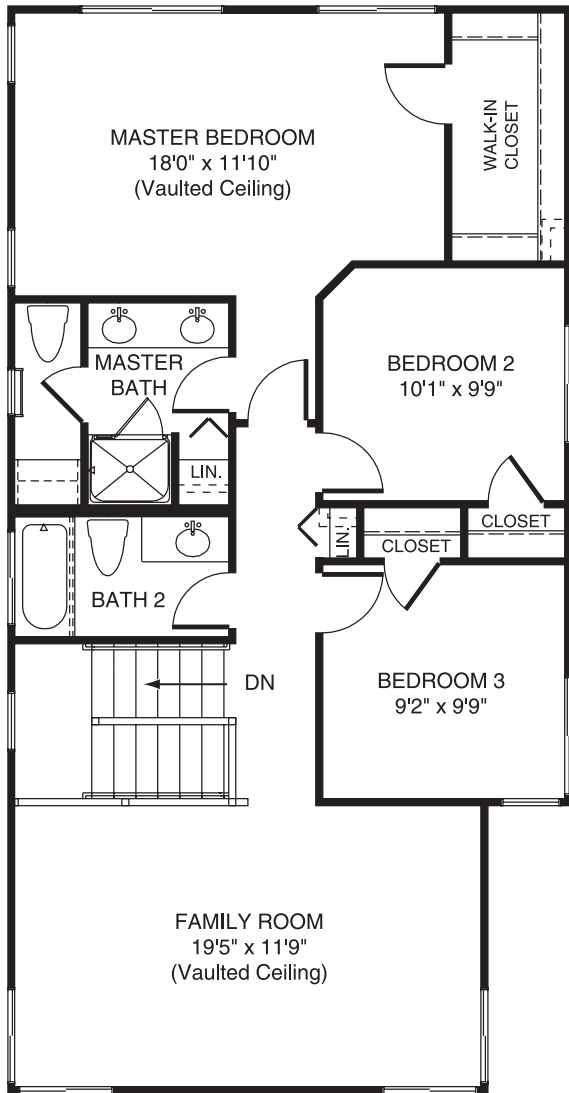
Living Area	1,291 S.F.
Entry	12 S.F.
Garage	380 S.F.
Total Area	1,683 S.F.

(Plan shown above is reversed)

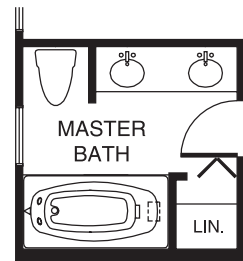
Because we are continually improving our homes, we reserve the right to make changes and modifications to methods and materials of construction and to the floorplans, features, square footage and room dimensions without notice. Floorplans, features, square footage and room dimensions are intended to be as accurate as possible. However, due to actual construction, floorplans, features, square footage and room dimensions may differ. These floorplans and renderings are a fair representation of the models to assist the customer in visualizing the homes and may not be accurately depicted. Sales prices are subject to change without notice. Check with your sales representative.



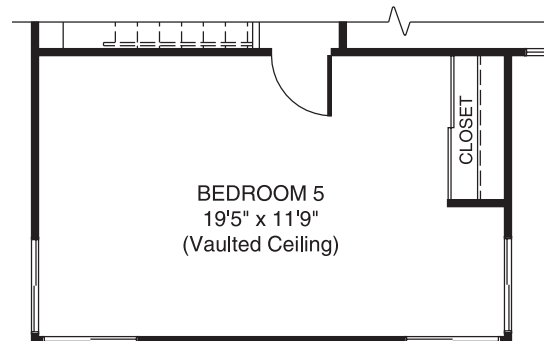
SECOND FLOOR DECK OPTION
(Additional 141 S.F.)



SECOND FLOOR



FULL BATH IN MASTER BATHROOM OPTION



BEDROOM 5 OPTION
(Replaces Family Room)

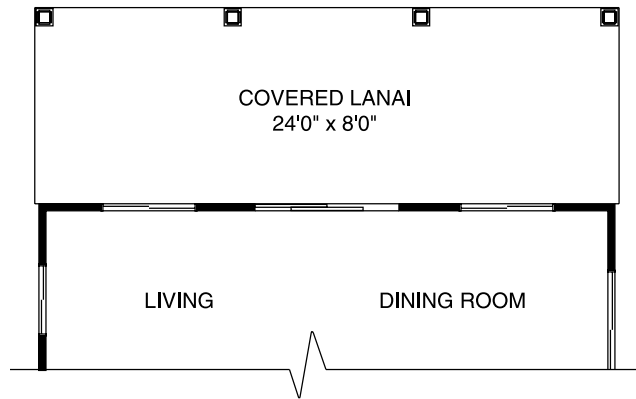
FLOOR AREA

Living Area	1,808 S.F.
Entry	38 S.F.
Garage	435 S.F.
Total Area	2,281 S.F.

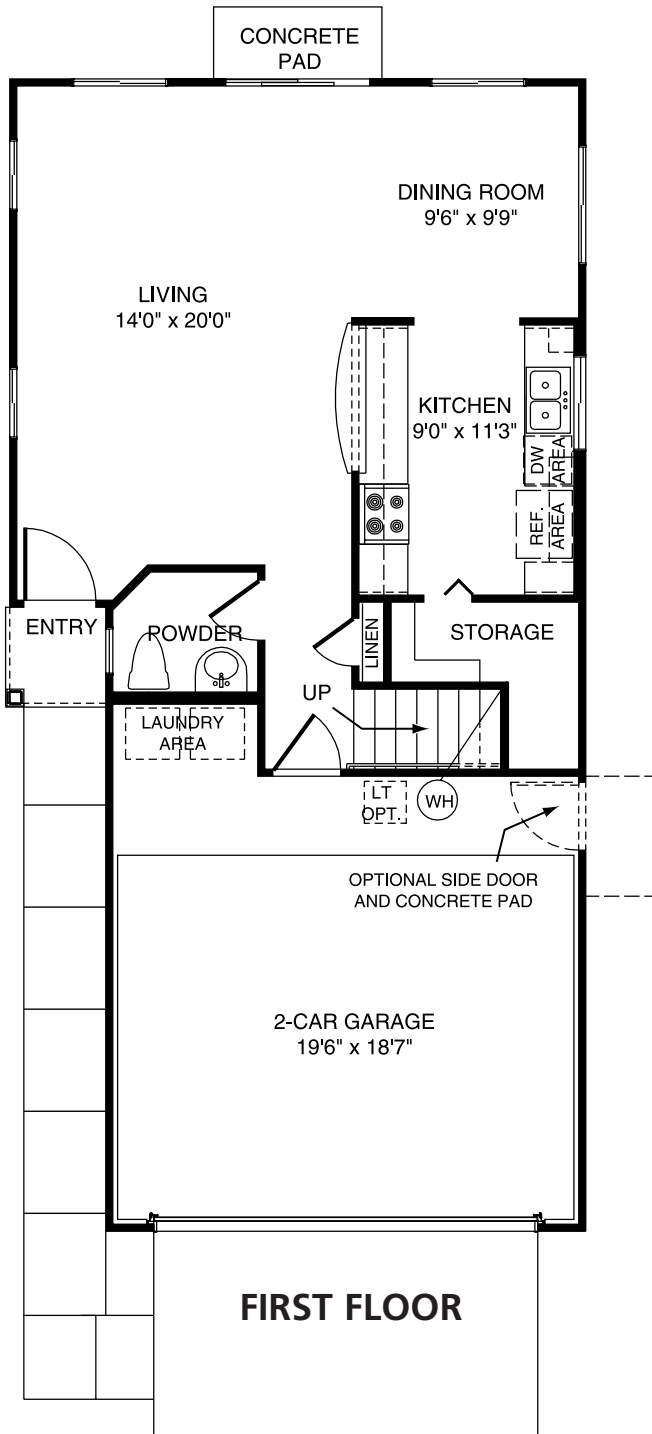
Aniani

(PLAN 3)

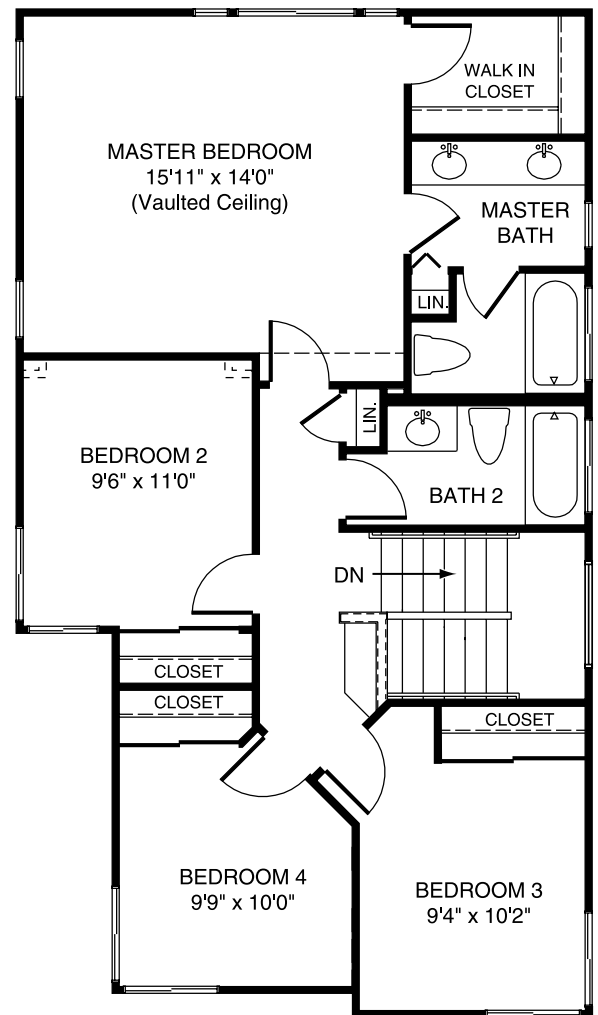
4 Bedroom / 2.5 Bath



COVERED LANAI OPTION
(Additional 192 S.F.)



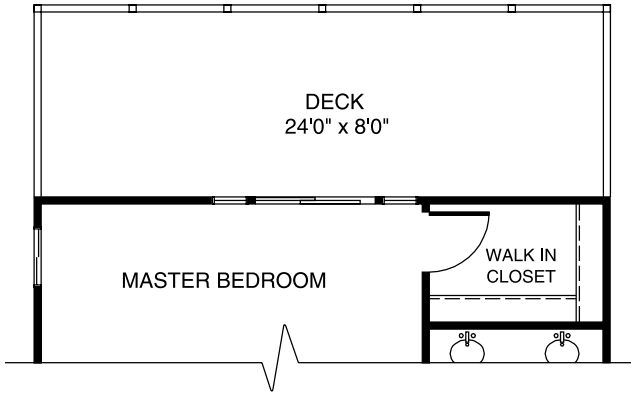
FIRST FLOOR



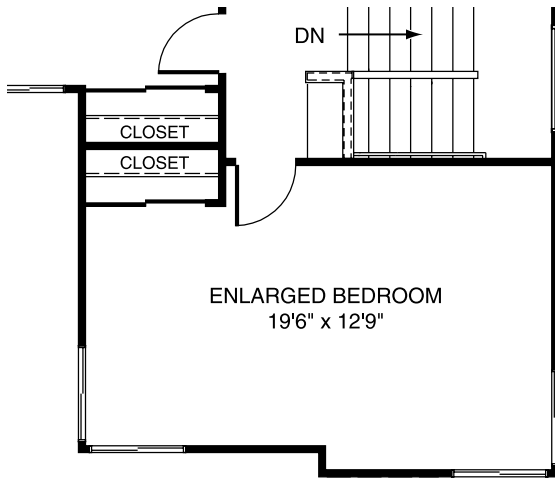
SECOND FLOOR

(Plan shown above is reversed)

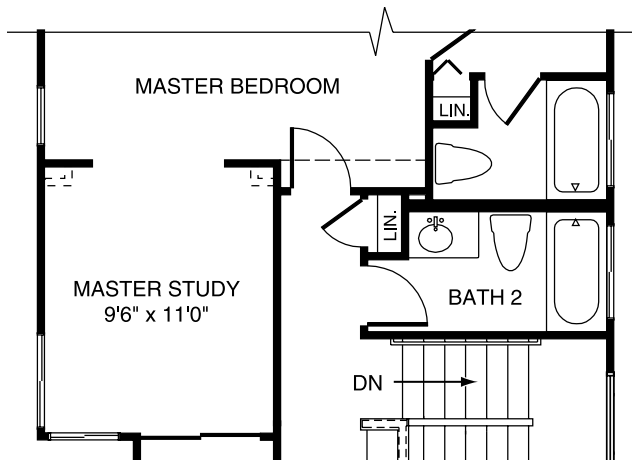
Because we are continually improving our homes, we reserve the right to make changes and modifications to methods and materials of construction and to the floorplans, features, square footage and room dimensions without notice. Floorplans, features, square footage and room dimensions are intended to be as accurate as possible. However, due to actual construction, floorplans, features, square footage and room dimensions may differ. These floorplans and renderings are a fair representation of the models to assist the customer in visualizing the homes and may not be accurately depicted. Sales prices are subject to change without notice. Check with your sales representative.



SECOND FLOOR DECK OPTION
(Additional 192 S.F.)



ENLARGED BEDROOM OPTION
(Bedrooms 3 & 4 Combined)



MASTER STUDY OPTION
(Replaces Bedroom 2)

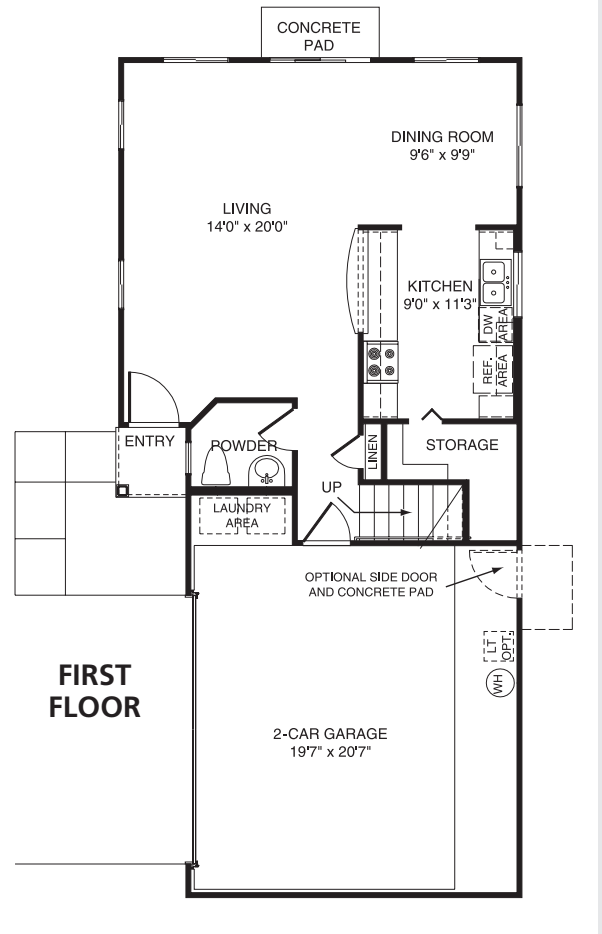
FLOOR AREA

Living Area	1,528 S.F.
Entry	17 S.F.
Garage	398 S.F.
Total Area	1,943 S.F.



Koaniani

(PLAN 3SG)
4 Bedroom / 2.5 Bath



FIRST FLOOR

(Plan shown above is reversed)

FLOOR AREA

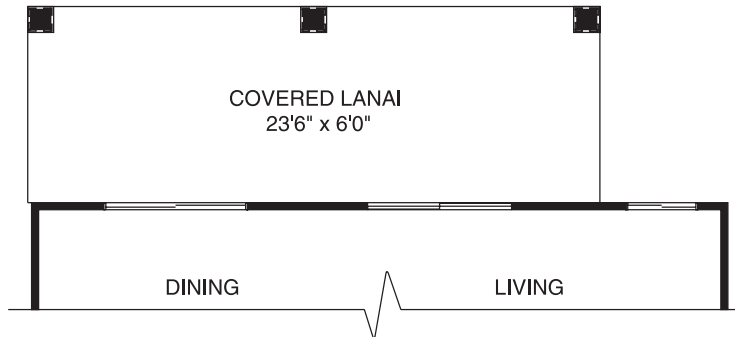
Living Area	1,528 S.F.
Entry	17 S.F.
Garage	438 S.F.
Total Area	1,983 S.F.

Oluolu (Plan 3SG) is identical to Malie (Plan 3) with the exception that the garage has been modified to fit the lot.

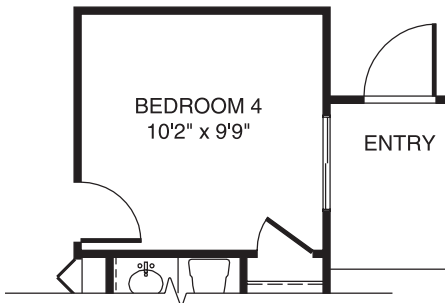
Kūlewa

(PLAN 4)

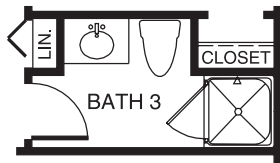
3 Bedroom / 2.5 Bath



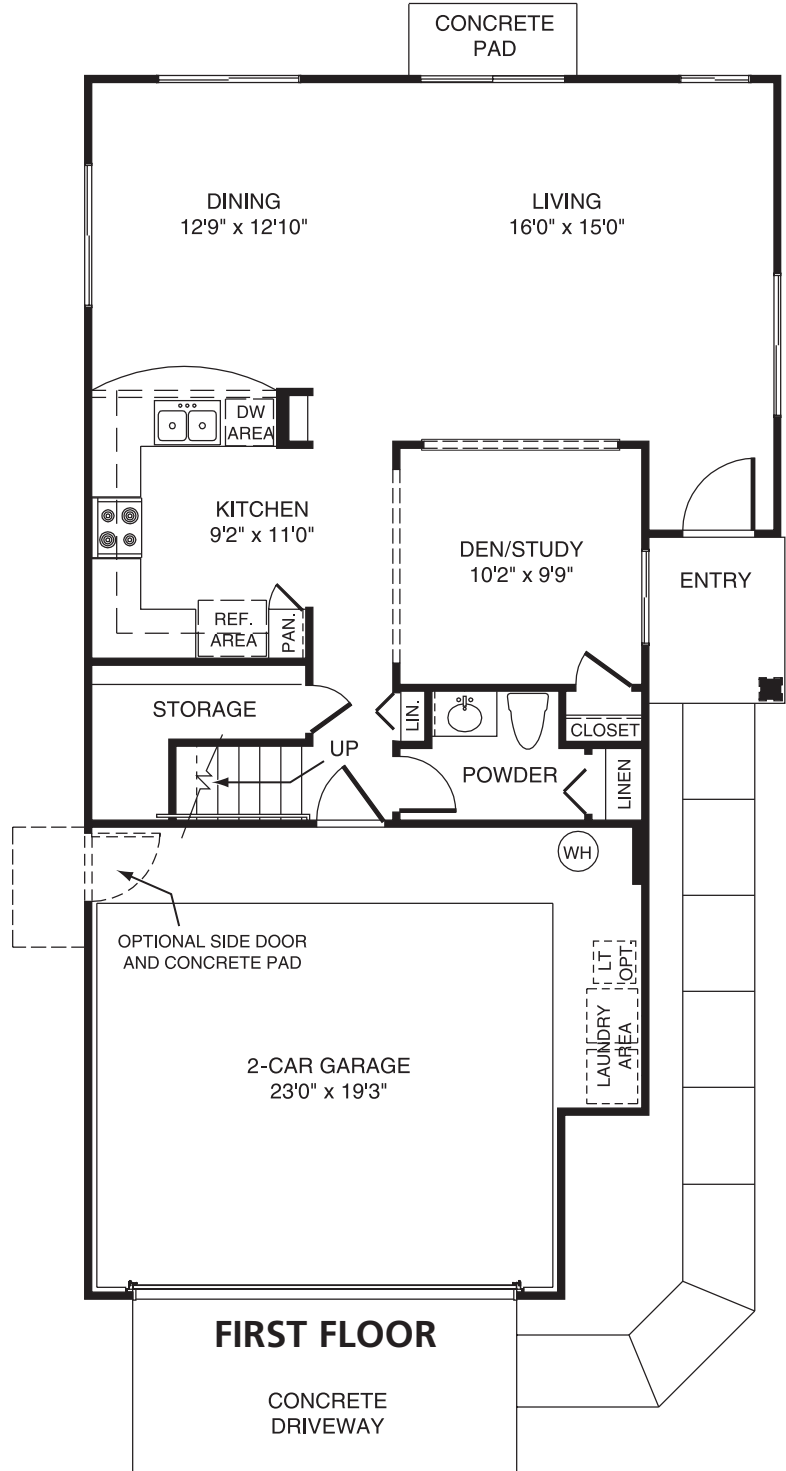
COVERED LANAI OPTION
(Additional 188 S.F.)



BEDROOM 4 OPTION
(Replaces Den/Study)



FULL BATH 3 OPTION
(REPLACES POWDER ROOM)



FIRST FLOOR

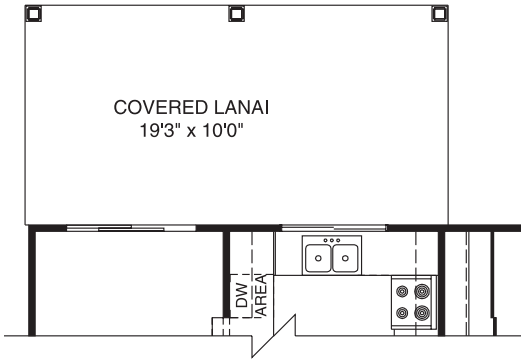
(Plan shown above is reversed)

Because we are continually improving our homes, we reserve the right to make changes and modifications to methods and materials of construction and to the floorplans, features, square footage and room dimensions without notice. Floorplans, features, square footage and room dimensions are intended to be as accurate as possible. However, due to actual construction, floorplans, features, square footage and room dimensions may differ. These floorplans and renderings are a fair representation of the models to assist the customer in visualizing the homes and may not be accurately depicted. Sales prices are subject to change without notice. Check with your sales representative.

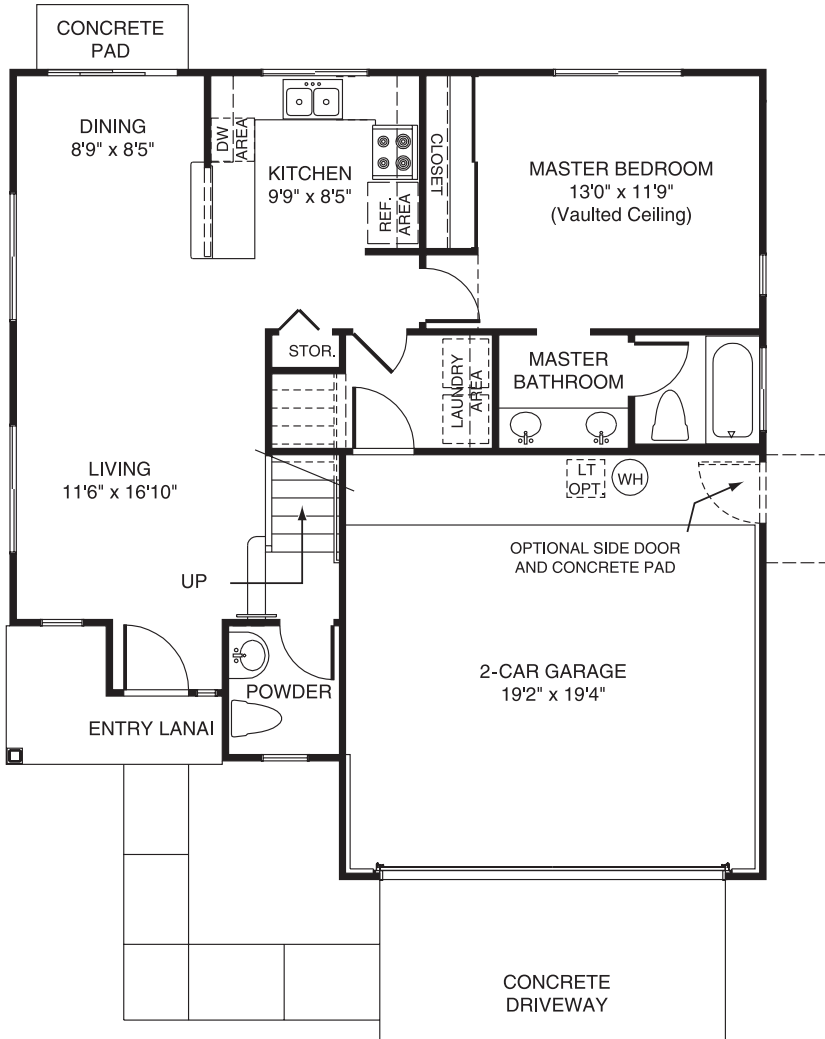
Pe'ahi

(PLAN 2)

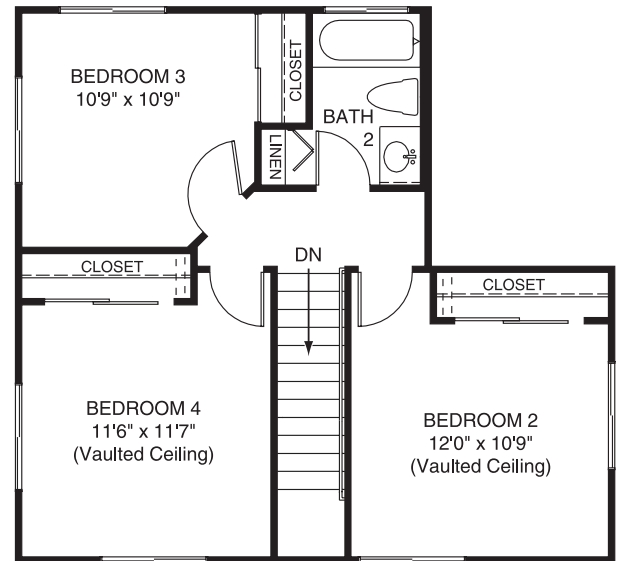
4 Bedroom / 2.5 Bath



COVERED LANAI OPTION
(Additional 199 S.F.)



FIRST FLOOR



SECOND FLOOR

FLOOR AREA

Living Area	1,373 S.F.
Entry	44 S.F.
Garage	383 S.F.
Total Area	1,800 S.F.

(Plan shown above is reversed)

Because we are continually improving our homes, we reserve the right to make changes and modifications to methods and materials of construction and to the floorplans, features, square footage and room dimensions without notice. Floorplans, features, square footage and room dimensions are intended to be as accurate as possible. However, due to actual construction, floorplans, features, square footage and room dimensions may differ. These floorplans and renderings are a fair representation of the models to assist the customer in visualizing the homes and may not be accurately depicted. Sales prices are subject to change without notice. Check with your sales representative.